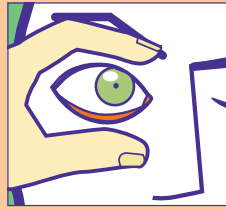


Signs of Opioid Overdose



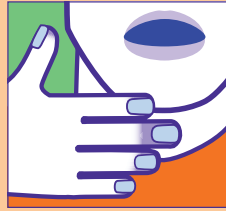
Does not respond to voice or shaking



Pin-point pupils



Shallow breathing or gurgling sounds



Lips or fingernails blue or gray — face pale or clammy

Not to be reproduced without permission of NCADA

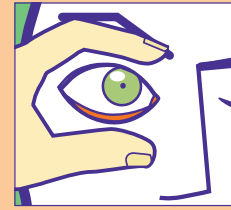
RISK FACTORS FOR OPIOID OVERDOSE

RECENT OVERDOSE • IV USE
USING MORE THAN ONE DRUG
USE AFTER A PERIOD OF ABSTINENCE

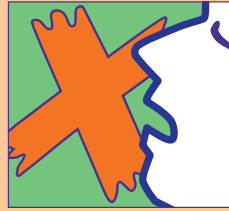
Signs of Opioid Overdose



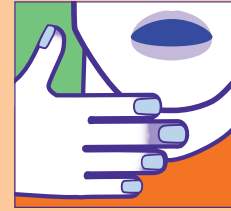
Does not respond to voice or shaking



Pin-point pupils



Shallow breathing or gurgling sounds



Lips or fingernails blue or gray — face pale or clammy

Not to be reproduced without permission of NCADA

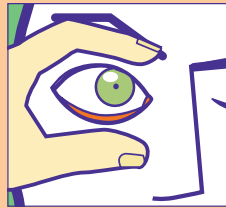
RISK FACTORS FOR OPIOID OVERDOSE

RECENT OVERDOSE • IV USE
USING MORE THAN ONE DRUG
USE AFTER A PERIOD OF ABSTINENCE

Signs of Opioid Overdose



Does not respond to voice or shaking



Pin-point pupils



Shallow breathing or gurgling sounds



Lips or fingernails blue or gray — face pale or clammy

Not to be reproduced without permission of NCADA

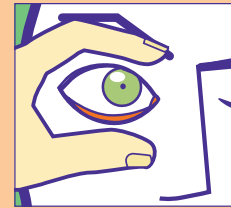
RISK FACTORS FOR OPIOID OVERDOSE

RECENT OVERDOSE • IV USE
USING MORE THAN ONE DRUG
USE AFTER A PERIOD OF ABSTINENCE

Signs of Opioid Overdose



Does not respond to voice or shaking



Pin-point pupils



Shallow breathing or gurgling sounds



Lips or fingernails blue or gray — face pale or clammy

Not to be reproduced without permission of NCADA

RISK FACTORS FOR OPIOID OVERDOSE

RECENT OVERDOSE • IV USE
USING MORE THAN ONE DRUG
USE AFTER A PERIOD OF ABSTINENCE

Print on card stock or "cover weight" paper. The thin black lines at the corners show where to cut out the cards. Finished card size is 3" x 5".



MO-HOPE Project
Together We Can Save Lives

FOR INFORMATION ABOUT TREATMENT, NALOXONE, OR OTHER RESOURCES:

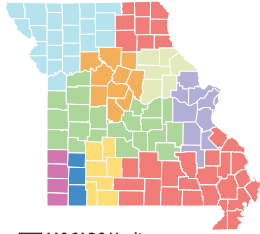
MO-HOPE
MOHopeProject.org

SAMHSA HELPLINE (24/7)
800-662-HELP (4357)

MISSOURI DEPT. OF MENTAL HEALTH
800-575-7480
dmh.mo.gov
UNITED WAY
Dial 2-1-1

Or Contact Your County's Mental Health Crisis Hotline

- CommCare Hotline**
888-279-8188
Andrew, Atchison, Buchanan, Caldwell, Clay, Clinton, Daviess, DeKalb, Gentry, Grundy, Harrison, Holt, Jackson, Linn, Livingston, Mercer, Nodaway, Platte, Putnam, Ray, Sullivan, Worth
- Burrell Behavioral Health**
800-395-2132
Boone, Carroll, Chariton, Cooper, Howard, Moniteau, Morgan, Pettis, Randolph, Saline
- Compass Health Hotline**
800-833-3915
Bates, Benton, Camden, Cass, Cedar, Cole, Crawford, Dent, Gasconade, Henry, Hickory, Johnson, Laclede, Lafayette, Maries, Miller, Osage, Phelps, Pulaski, St. Clair, Vernon
- Ozark Hotline – 800-247-0661**
Barton, Jasper, McDonald, Newton
- Clark Center Hotline**
800-801-4405
Barry, Dade, Lawrence
- Burrell System – 800-494-7355**
Christian, Dallas, Greene, Polk, Stone, Taney, Webster



- MOCARS Hotline**
800-356-5395
Adair, Bollinger, Butler, Cape Girardeau, Carter, Clark, Douglas, Dunklin, Howell, Knox, Lewis, Macon, Madison, Marion, Mississippi, New Madrid, Oregon, Ozark, Pemiscot, Perry, Reynolds, Ripley, Schuyler, Scotland, Scott, Shannon, Shelby, Ste. Genevieve, Stoddard, Texas, Wayne, Wright
- Behavioral Health Response Hotline – 800-811-4760**
Franklin, Iron, Jefferson, Lincoln, St. Charles, St. Francois, St. Louis City, St. Louis County, Warren, Washington
- Arthur Center Hotline**
800-833-2064
Audrain, Callaway, Monroe, Montgomery, Pike, Ralls



MO-HOPE Project
Together We Can Save Lives

FOR INFORMATION ABOUT TREATMENT, NALOXONE, OR OTHER RESOURCES:

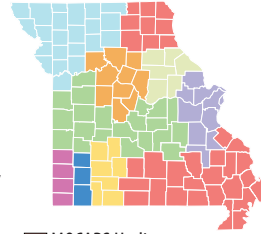
MO-HOPE
MOHopeProject.org

SAMHSA HELPLINE (24/7)
800-662-HELP (4357)

MISSOURI DEPT. OF MENTAL HEALTH
800-575-7480
dmh.mo.gov
UNITED WAY
Dial 2-1-1

Or Contact Your County's Mental Health Crisis Hotline

- CommCare Hotline**
888-279-8188
Andrew, Atchison, Buchanan, Caldwell, Clay, Clinton, Daviess, DeKalb, Gentry, Grundy, Harrison, Holt, Jackson, Linn, Livingston, Mercer, Nodaway, Platte, Putnam, Ray, Sullivan, Worth
- Burrell Behavioral Health**
800-395-2132
Boone, Carroll, Chariton, Cooper, Howard, Moniteau, Morgan, Pettis, Randolph, Saline
- Compass Health Hotline**
800-833-3915
Bates, Benton, Camden, Cass, Cedar, Cole, Crawford, Dent, Gasconade, Henry, Hickory, Johnson, Laclede, Lafayette, Maries, Miller, Osage, Phelps, Pulaski, St. Clair, Vernon
- Ozark Hotline – 800-247-0661**
Barton, Jasper, McDonald, Newton
- Clark Center Hotline**
800-801-4405
Barry, Dade, Lawrence
- Burrell System – 800-494-7355**
Christian, Dallas, Greene, Polk, Stone, Taney, Webster



- MOCARS Hotline**
800-356-5395
Adair, Bollinger, Butler, Cape Girardeau, Carter, Clark, Douglas, Dunklin, Howell, Knox, Lewis, Macon, Madison, Marion, Mississippi, New Madrid, Oregon, Ozark, Pemiscot, Perry, Reynolds, Ripley, Schuyler, Scotland, Scott, Shannon, Shelby, Ste. Genevieve, Stoddard, Texas, Wayne, Wright
- Behavioral Health Response Hotline – 800-811-4760**
Franklin, Iron, Jefferson, Lincoln, St. Charles, St. Francois, St. Louis City, St. Louis County, Warren, Washington
- Arthur Center Hotline**
800-833-2064
Audrain, Callaway, Monroe, Montgomery, Pike, Ralls



MO-HOPE Project
Together We Can Save Lives

FOR INFORMATION ABOUT TREATMENT, NALOXONE, OR OTHER RESOURCES:

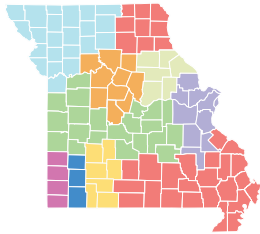
MO-HOPE
MOHopeProject.org

SAMHSA HELPLINE (24/7)
800-662-HELP (4357)

MISSOURI DEPT. OF MENTAL HEALTH
800-575-7480
dmh.mo.gov
UNITED WAY
Dial 2-1-1

Or Contact Your County's Mental Health Crisis Hotline

- CommCare Hotline**
888-279-8188
Andrew, Atchison, Buchanan, Caldwell, Clay, Clinton, Daviess, DeKalb, Gentry, Grundy, Harrison, Holt, Jackson, Linn, Livingston, Mercer, Nodaway, Platte, Putnam, Ray, Sullivan, Worth
- Burrell Behavioral Health**
800-395-2132
Boone, Carroll, Chariton, Cooper, Howard, Moniteau, Morgan, Pettis, Randolph, Saline
- Compass Health Hotline**
800-833-3915
Bates, Benton, Camden, Cass, Cedar, Cole, Crawford, Dent, Gasconade, Henry, Hickory, Johnson, Laclede, Lafayette, Maries, Miller, Osage, Phelps, Pulaski, St. Clair, Vernon
- Ozark Hotline – 800-247-0661**
Barton, Jasper, McDonald, Newton
- Clark Center Hotline**
800-801-4405
Barry, Dade, Lawrence
- Burrell System – 800-494-7355**
Christian, Dallas, Greene, Polk, Stone, Taney, Webster



- MOCARS Hotline**
800-356-5395
Adair, Bollinger, Butler, Cape Girardeau, Carter, Clark, Douglas, Dunklin, Howell, Knox, Lewis, Macon, Madison, Marion, Mississippi, New Madrid, Oregon, Ozark, Pemiscot, Perry, Reynolds, Ripley, Schuyler, Scotland, Scott, Shannon, Shelby, Ste. Genevieve, Stoddard, Texas, Wayne, Wright
- Behavioral Health Response Hotline – 800-811-4760**
Franklin, Iron, Jefferson, Lincoln, St. Charles, St. Francois, St. Louis City, St. Louis County, Warren, Washington
- Arthur Center Hotline**
800-833-2064
Audrain, Callaway, Monroe, Montgomery, Pike, Ralls



MO-HOPE Project
Together We Can Save Lives

FOR INFORMATION ABOUT TREATMENT, NALOXONE, OR OTHER RESOURCES:

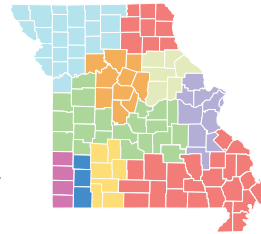
MO-HOPE
MOHopeProject.org

SAMHSA HELPLINE (24/7)
800-662-HELP (4357)

MISSOURI DEPT. OF MENTAL HEALTH
800-575-7480
dmh.mo.gov
UNITED WAY
Dial 2-1-1

Or Contact Your County's Mental Health Crisis Hotline

- CommCare Hotline**
888-279-8188
Andrew, Atchison, Buchanan, Caldwell, Clay, Clinton, Daviess, DeKalb, Gentry, Grundy, Harrison, Holt, Jackson, Linn, Livingston, Mercer, Nodaway, Platte, Putnam, Ray, Sullivan, Worth
- Burrell Behavioral Health**
800-395-2132
Boone, Carroll, Chariton, Cooper, Howard, Moniteau, Morgan, Pettis, Randolph, Saline
- Compass Health Hotline**
800-833-3915
Bates, Benton, Camden, Cass, Cedar, Cole, Crawford, Dent, Gasconade, Henry, Hickory, Johnson, Laclede, Lafayette, Maries, Miller, Osage, Phelps, Pulaski, St. Clair, Vernon
- Ozark Hotline – 800-247-0661**
Barton, Jasper, McDonald, Newton
- Clark Center Hotline**
800-801-4405
Barry, Dade, Lawrence
- Burrell System – 800-494-7355**
Christian, Dallas, Greene, Polk, Stone, Taney, Webster



- MOCARS Hotline**
800-356-5395
Adair, Bollinger, Butler, Cape Girardeau, Carter, Clark, Douglas, Dunklin, Howell, Knox, Lewis, Macon, Madison, Marion, Mississippi, New Madrid, Oregon, Ozark, Pemiscot, Perry, Reynolds, Ripley, Schuyler, Scotland, Scott, Shannon, Shelby, Ste. Genevieve, Stoddard, Texas, Wayne, Wright
- Behavioral Health Response Hotline – 800-811-4760**
Franklin, Iron, Jefferson, Lincoln, St. Charles, St. Francois, St. Louis City, St. Louis County, Warren, Washington
- Arthur Center Hotline**
800-833-2064
Audrain, Callaway, Monroe, Montgomery, Pike, Ralls